

The Reality of Continuous Glucose Monitoring

Mary Voelmle FNP, CDE
Christie Beatson RD, CDE



Barriers of CGM

- Patient Expectation
- Understanding lag time

“Is a CGM reliable? i asked my new endo about it and he said they aren't reliable and do not improve glucose control. He said they are "delayed" readings and provide false blood glucose because its not from your finger.”

<http://juvenation.org/forums/p/2080/14541.aspx>

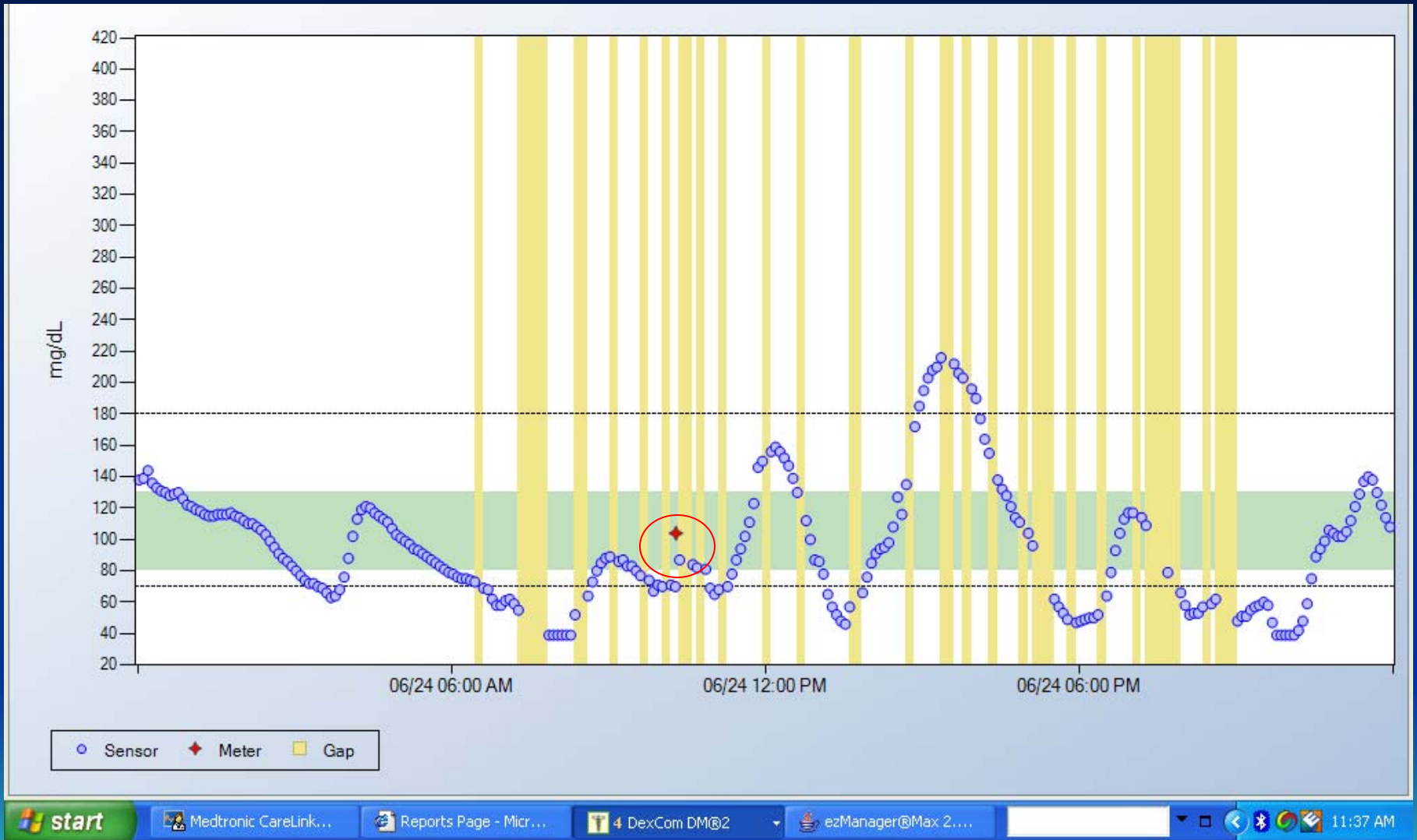


Patient Expectation

- Replacement SMBG
- Perfect glucose control
- Catch all hypoglycemic events
- Improve A1c significantly
- Replace YOU!



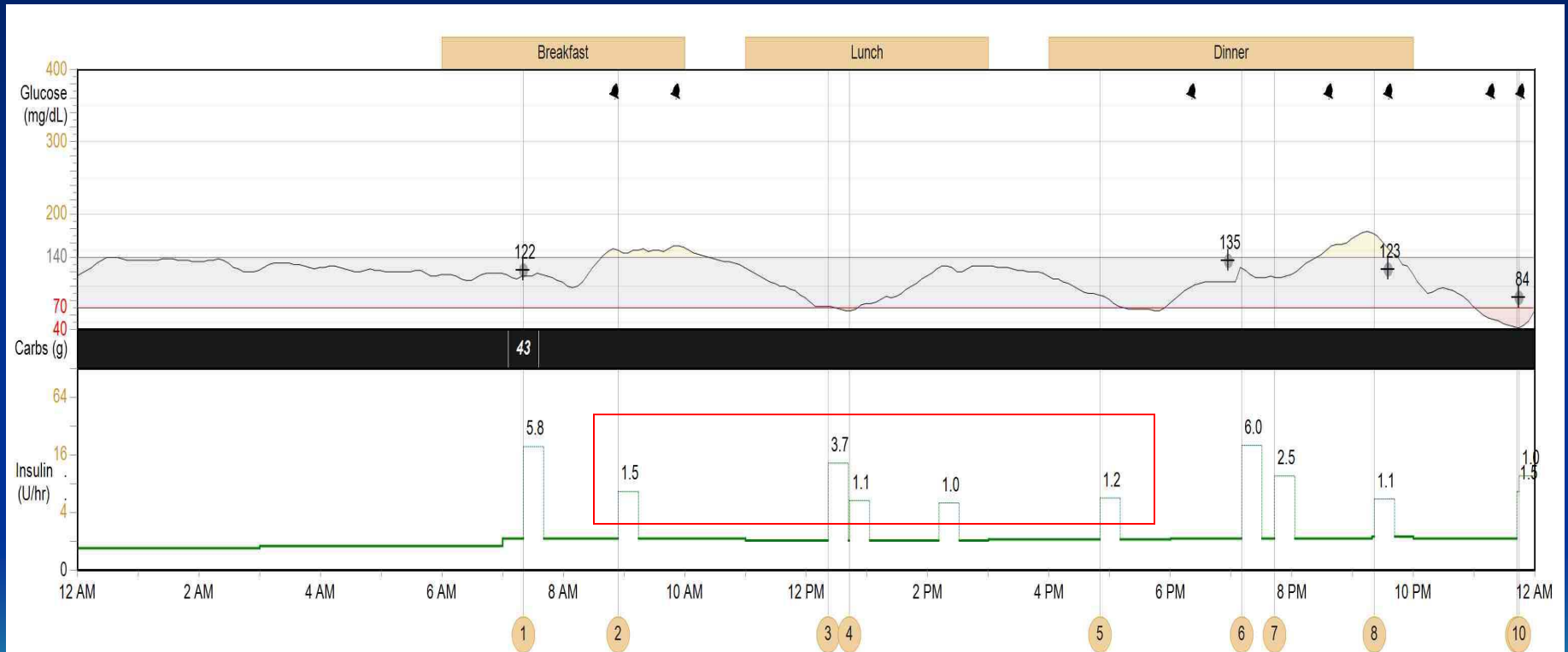
DexCom - Calibrated Once



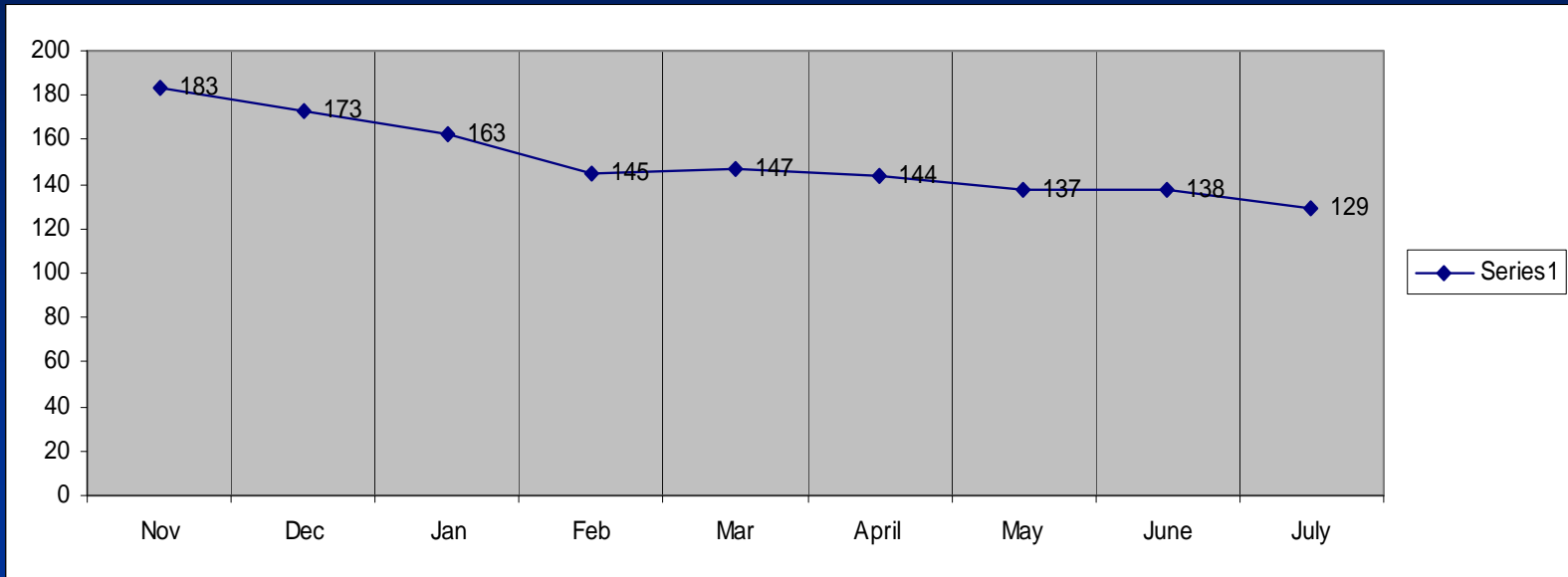
Acceptable Lag



Reality of use – dosing without SMBG

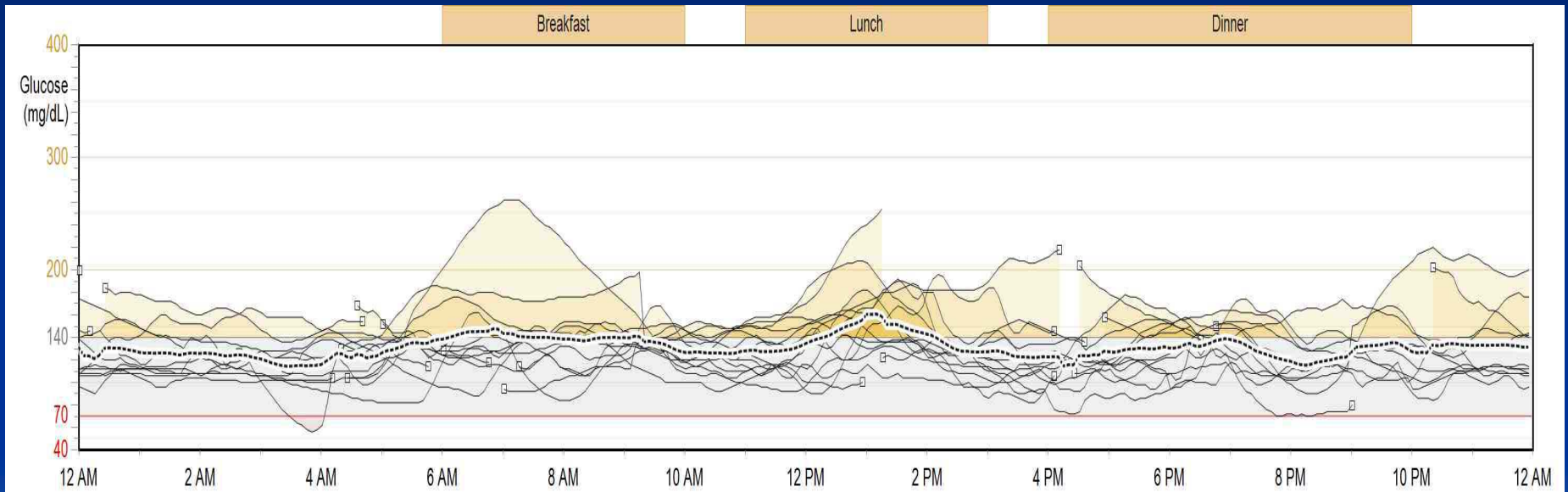


9 months of sensor use



9/08 9.0% 2/09 8.3% 6/09 7.3% 7/09 6.9%

Download with 6.9% A1c



Retention of Rx for DexCom

- **DexCom 7** - too many written/ process started to contemplate
- 148 product shipped
- 69 patients using alternative therapy, no insurance coverage, no longer using
- 79 continue to use regularly – **55% continued use**



Retention of Rx for Medtronic RT

- **Medtronic RT** - unable to track number written/ process started
- 166 product shipped in past year
- 35% alternative therapy, no insurance coverage
- 65% continue to use regularly/ occasionally



Retention of Rx for Navigator

- **Navigator** – 65 written/ process started
- 30 - product shipped
- 35 – process terminated, alternative device, patient returned, no insurance coverage, patient changed mind
- (24/30) – 80% continue to use at least occasionally

