

**UNIVERSITY OF COLORADO at DENVER
and
HEALTH SCIENCES CENTER**

**HEALTH SCIENCES CENTER
ANNUAL REPORT**

**SPONSORED PROGRAMS
AND
OTHER RESTRICTED FUND ACTIVITY
FISCAL YEAR 2005**

**PREPARED BY OFFICE OF GRANTS AND CONTRACTS
HEALTH SCIENCES CENTER**

“A Record Year”

This Annual Report of Sponsored Program and Other Restricted Fund Activity provides a comprehensive overview of the extraordinary success of research at the Health Sciences Center during Fiscal Year 2005. Our research mission is to advance existing knowledge, develop new knowledge for the prevention and treatment of human disease, and to improve human health. This report highlights 1,618 projects that bring funding to the State of Colorado and have the potential to improve lives through research and education.

During Fiscal Year 2005, Health Sciences Center sponsored project awards exceeded a record \$345 million; a 15% increase over the previous year. Restricted fund expenditure activity increased 4% for a total of \$315 million. In an environment where competition for extramural research funding has become significantly more challenging, the Health Sciences Center research faculty have continued to succeed – identifying research opportunities, bringing forth new innovations and pushing the frontiers of discovery.

We have expanded the traditional “Top 20” list this year to include a truly impressive “Top 50.” Within this group are 33 grants in the \$1-\$2M range, 11 between \$2 and \$3M and a remarkable six more between \$3 and \$7M. The Principal Investigators for these large programs include some of our most respected biomedical scientists and research scholars such as Paul Bunn, M.D., George Eisenbarth, M.D., Ph.D., Spero Manson, Ph.D., Robert Freedman, M.D., Herman Jenkins, M.D., Richard Krugman, M.D., Tom Campbell, M.D., Tom Crowley, M.D., Boris Tabakoff, Ph.D. and many others. In fact, Dr. Manson appears five times among the “Top 50.” One additional award that is noteworthy is directed by Steve Goodman, M.D. It just missed the top 50 list at \$943,989, but because it's in its 37th year of funding it deserves special praise. Please review our expanded list and when the opportunity arises help us celebrate these extraordinary successes by offering congratulations for their accomplishments.

Here are just a few additional highlights of research funded during FY 2005 as submitted to us in response to our request to our Deans for research successes. We probably are all familiar with some accomplishments such as Dr. David Jones' new 900 MHz NMR which was lifted into RC1S this summer by an impressive crane. The School of Medicine's Adult GCRC completed its 44th year of consecutive funding and the Pediatric GCRC completed its 43rd year of funding. These awards represent a combined total of \$10.7M annual research income to the Health Sciences Center.

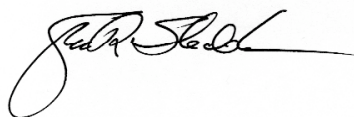
The School of Dentistry has organized a Student Research Group with summer scholarships with an additional \$1M in infrastructure funding and Associate Dean for Research, Dr. David Quissell led a successful effort to bring a U24 award from the Dental Institute to enhance dental research infrastructure at the Health Sciences Center. Three new faculty are being recruited this year alone and more will follow. Ruth O'Brien, R.N., Ph.D., Professor in the School of Nursing, has been involved in the very successful interdisciplinary National Center for Children, Families and Communities at UCDHSC. Dr. O'Brien received external funding to further study the process of training health care providers to implement evidence based practice interventions and to study the team, organizational, inter-organizational, and community factors that impact the success of prevention focused interventions.

Dr. Rui Zhao, Department of Biochemistry and Molecular Genetics in our School of Medicine, received a V Foundation Award to study how Six 1 exerts its effect in the cell through interactions with DNA and its co-activator Eya protein. The Colorado Women's Reproductive Health Research Career Development Center, Department of Obstetrics and Gynecology, received an additional five years of funding, at \$400,000 per year; this grant supports basic science training of obstetricians-gynecologists. Xianzhong Meng, M.D., Department of Surgery, was awarded a 5-year, \$1.7M grant by National Heart, Lung and Blood Institute/NIH to study "TLR4 and Cardiac Inflammatory Response to I/R."

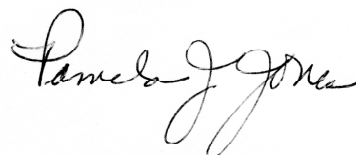
Raj Agarwal, Ph.D., Chapla Agarwal, Ph.D., Dan Gustafson, Ph.D., Al Malkinson, Ph.D., and David Ross, Ph.D., of our School of Pharmacy, collectively were awarded over \$12 million in grant funding with \$3 million funded during FY 2005. The Rocky Mountain Prevention Research Center was renewed by CDC for another five years to promote healthy living in rural Colorado with an award to Principal Investigator Dr. Julie Marshall. Dr. Ani Banerjee's work has been renewed for another five years by NIGMS at a level of \$9.9M for a study entitled "Trauma Primes Cells."

These are but a few of the accomplishments of a thousand or more faculty who continually lead the U.S. in basic and clinical research. Everyone should be extremely proud and remember to celebrate these victories by our distinguished academy.

Finally, congratulations are extended to all members of the Health Sciences Center community who are responsible for this outstanding year in research. We thank you for your contributions to the university and the potential impacts of your work on humankind. Parenthetically, one of us grew up in "The City by the Lake" where its grand architect, Daniel Burnham, reportedly admonished its residents to "make no small plans." Clearly, our faculty collectively have made no small plans and the success of this great health sciences university rests upon your extraordinary abilities. Thank you.



John R. Sladek, Ph.D.
Vice Chancellor for Research



Pamela J. Jones, Ph.D.
Director, Office of Grants and Contracts

Overview of Fiscal Year 2005¹ Activities	5
Awards	6
Awards by Sponsor	6
Figure 1: Awards by Sponsor	6
Figure 2: Distribution of Awards from the National Institutes of Health	7
Awards by Organizational Unit	8
Figure 3: Percentage of Awards by Organizational Unit	8
Awards by Function 10 Year Comparison	9
Figure 4: Awards by Function 10 Year Comparison	9
Expenditures	10
Expenditures by Sponsor	10
Figure 5: Expenditures by Sponsor	10
Organizational Unit Expenditures by Sponsored Program and Other Restricted Fund Activity	11
School of Medicine Unit Expenditures Over Four Million	11
Sponsored Project Expenditures by Cost Category	12
Figure 6: Sponsored Project Expenditures by Cost Category	12
10 Year Comparison of Expenditures by Sponsored Program, Student Aid and Gift Activity	13
Figure 7: Expenditures by Funding Sources	14
Figure 8: 10 Year Comparison of Expenditures for Sponsored Program, Student Aid, and Gift Activity	14
Additional Information	15
Applications and Proposals Submitted for Sponsored Program Funding 10 Year Comparison	15
Figure 9: Dollar Value of Submitted Proposals	15
Top 50 Sponsored Program Awards	16-17
Endnotes	18

Introduction

The faculty's initiative and success are described in this Annual Report, which includes a summary of the proposal, award, and expenditure activity for Fiscal Year (FY) 2005. Please note that award data includes Fitzsimons construction funding, but it does not include gift and financial aid funding. On the other hand, expenditure data usually includes gift and financial aid funding (unless noted otherwise), but does not include construction expenditures.

Proposal Activity

During FY 2005, 2,716 proposals were submitted to obtain sponsored program funding for the Health Sciences Center, which is approximately a 3% increase over FY 2004. Total requests equaled \$553.1 million, 49% more than requested five years ago (in FY 2000). Of the total number of proposals submitted for funding, 81% of proposal volume was for research activities, equaling 89% of requested proposal dollars.

Award Activity

During FY 2005, the total number of awards received for sponsored programs was 1,618, totaling \$345.4 million in awards. This was approximately \$45.6 million more than the prior fiscal year's awards, equaling a 15.2% increase (and a 54% increase from five years ago). With Federal awards showing a 12% increase from the last fiscal year, the Health Sciences Center had a larger increase in non-federal awards of 25%.

Approximately 73% of the total awards were received from the Federal government. Over 95% of Federal dollars awarded were from the Department of Health and Human Services. Of all DHHS funding, over 89% came from the National Institutes of Health (NIH). Over 61% of NIH funding is distributed among five institutes, with the highest level of funding from the National Institute of Diabetes and Digestive and Kidney Diseases.

The two largest departments for sponsored funding are in the School of Medicine - the Departments of Medicine and Pediatrics.

Expenditure Activity

At the end of FY 2005, expenditures in the Restricted Fund exceeded \$314 million. The restricted fund includes sponsored programs, gifts, and student aid. Total expenditures increased by approximately 4% over FY 2004. Sponsored program expenditures exceeded \$285 million and were more than 90% of total Restricted Fund expenditures. For sponsored program expenditures, this was an increase of almost 3% over the prior fiscal year and an increase of over 56% from the expenditure level in FY 2000.

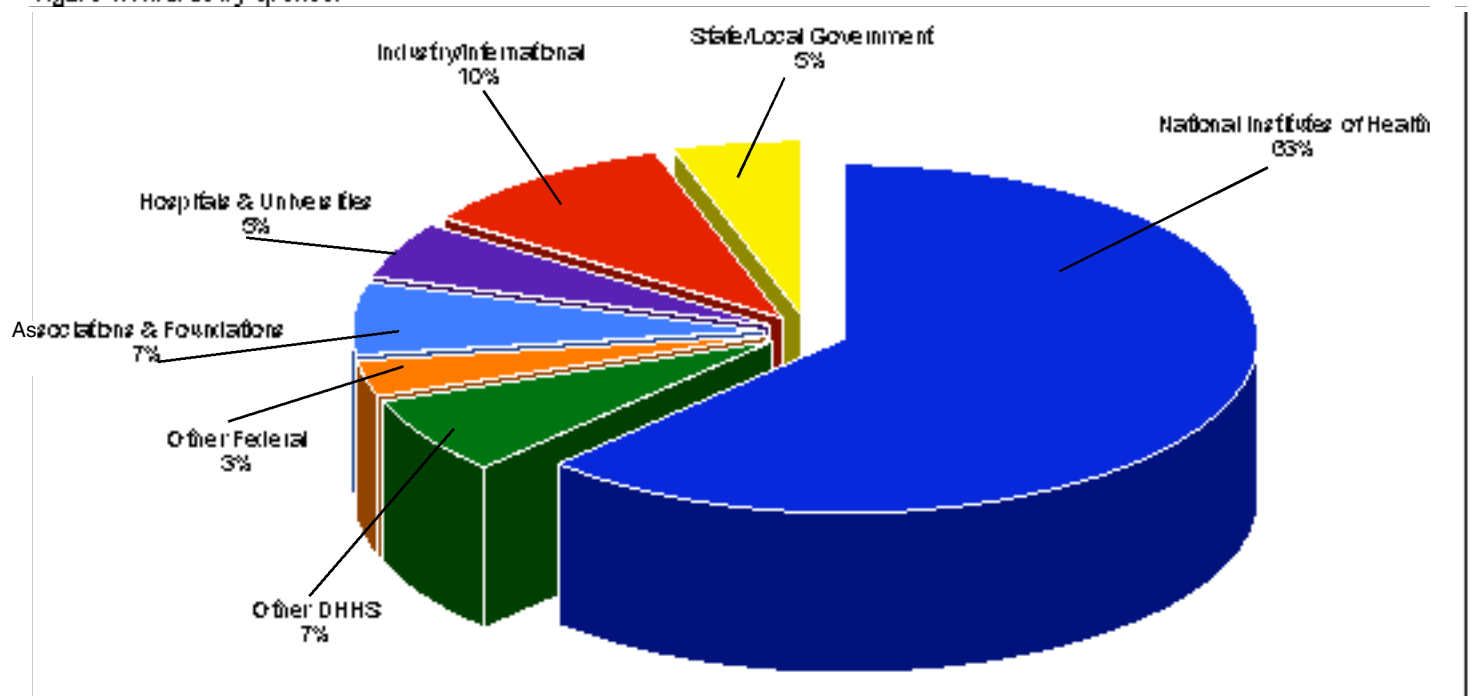
Although award activity includes awards for Fitzsimons construction, expenditure activity of about \$5.1 million was reported in the Plant Fund and not included in the restricted fund expenditure data. Therefore, tables and charts shown in this report do not reflect Plant Fund expenditure activity.

In reviewing sponsored program expenditures for FY 2005, 47% of all expenditures related to salaries, wages, and related fringe benefits. Only 22% of expenditures were allocated to Facilities and Administrative Cost Recovery.

AWARDS BY SPONSOR

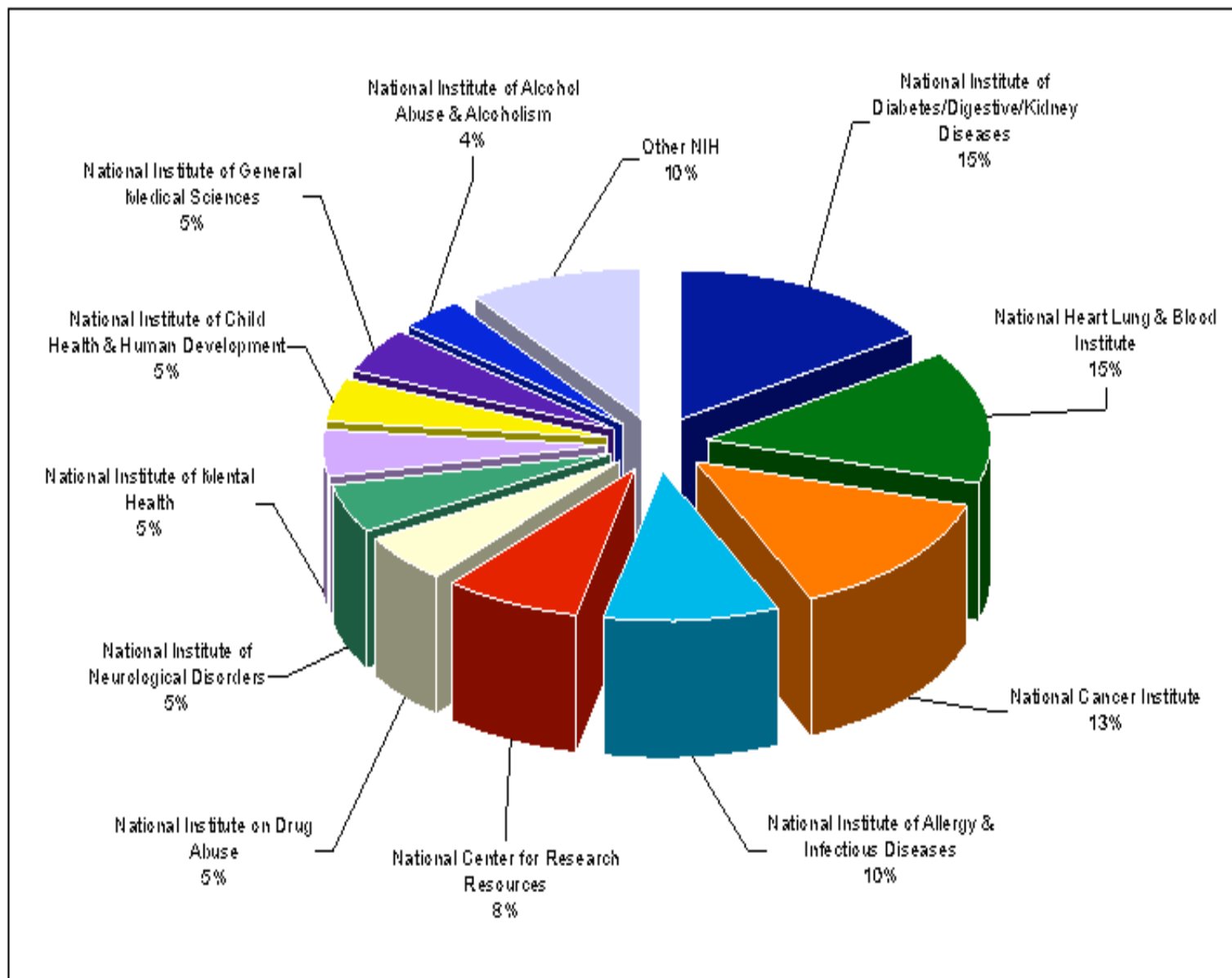
Sponsor	Number of Awards	Direct Costs	Facilities and Administrative (F&A) Costs	Total Costs	Percent
Federal					
Department of Health and Human Services (DHHS)					
National Institutes of Health	598	\$100,443,013	\$54,734,873	\$215,178,283	83%
Other	65	\$21,910,287	\$3,481,570	\$25,391,857	7%
Total DHHS	663	\$182,353,910	\$58,196,243	\$240,550,153	70%
Federal Other Than DHHS					
Department of Defense	8	\$707,750	\$352,828	\$1,120,878	0%
Department of Education	7	\$1,092,932	\$318,878	\$2,009,910	1%
National Science Foundation	9	\$559,415	\$219,804	\$1,079,019	0%
Veterans Administration	49	\$4,095,522	\$0	\$4,095,522	2%
Other Federal	3	\$1,208,282	\$131,734	\$1,339,993	0%
Total Non-DHHS	74	\$9,223,881	\$1,021,242	\$10,245,123	3%
Total Federal	737	\$191,577,791	\$59,217,485	\$250,795,276	73%
Non-Federal or Sub-Federal					
Associations & Foundations	240	\$19,948,941	\$2,538,221	\$22,483,182	7%
Hospitals & Universities	192	\$14,390,524	\$4,338,319	\$18,718,843	5%
Industry	267	\$30,035,079	\$5,080,824	\$35,145,803	10%
International	8	\$391,818	\$37,032	\$758,880	0%
State/Local Government	154	\$16,024,413	\$1,504,881	\$17,529,094	5%
Total Non-Federal	861	\$81,108,575	\$13,525,107	\$94,633,682	27%
Grand Total	1618	\$272,686,366	\$72,742,592	\$345,428,958	100%

Figure 1: Awards by Sponsor



DISTRIBUTION OF AWARDS FROM THE NATIONAL INSTITUTES OF HEALTH

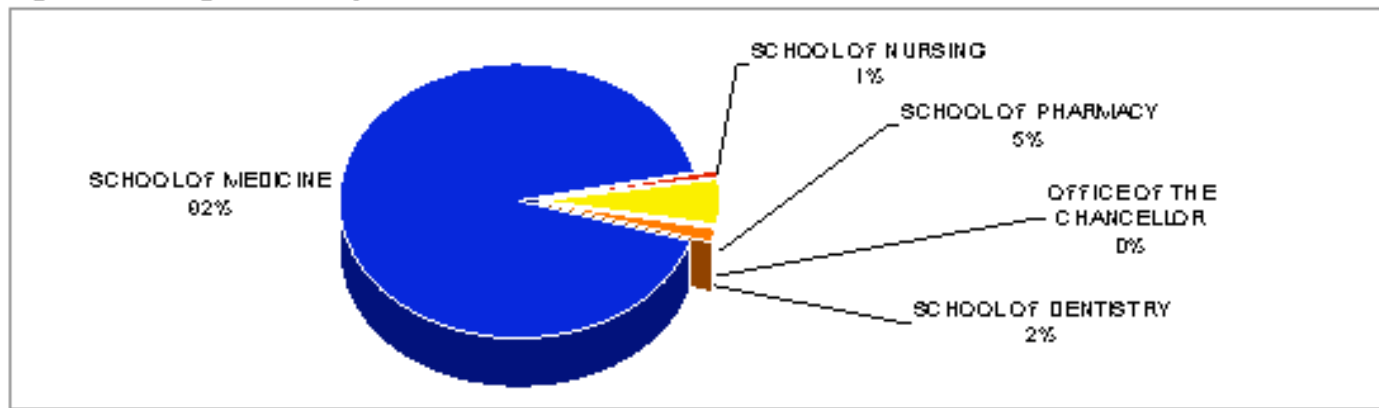
Figure 2



AWARDS BY ORGANIZATIONAL UNIT

ORGANIZATIONAL UNIT	Direct Costs	F&A Costs	Total
OFFICE OF THE CHANCELLOR	\$88,829	\$88,859	\$779,482
SCHOOL OF DENTISTRY	\$5,091,745	\$1,184,252	\$6,215,997
SCHOOL OF MEDICINE	\$249,994,497	\$67,299,019	\$916,927,490
SCHOOL OF NURSING	\$3,195,514	\$271,828	\$3,467,342
SCHOOL OF PHARMACY	\$14,197,811	\$3,908,848	\$18,044,957
GRAND TOTAL	\$272,668,395	\$72,742,592	\$945,428,958

Figure 3: Percentage of Awards by Unit



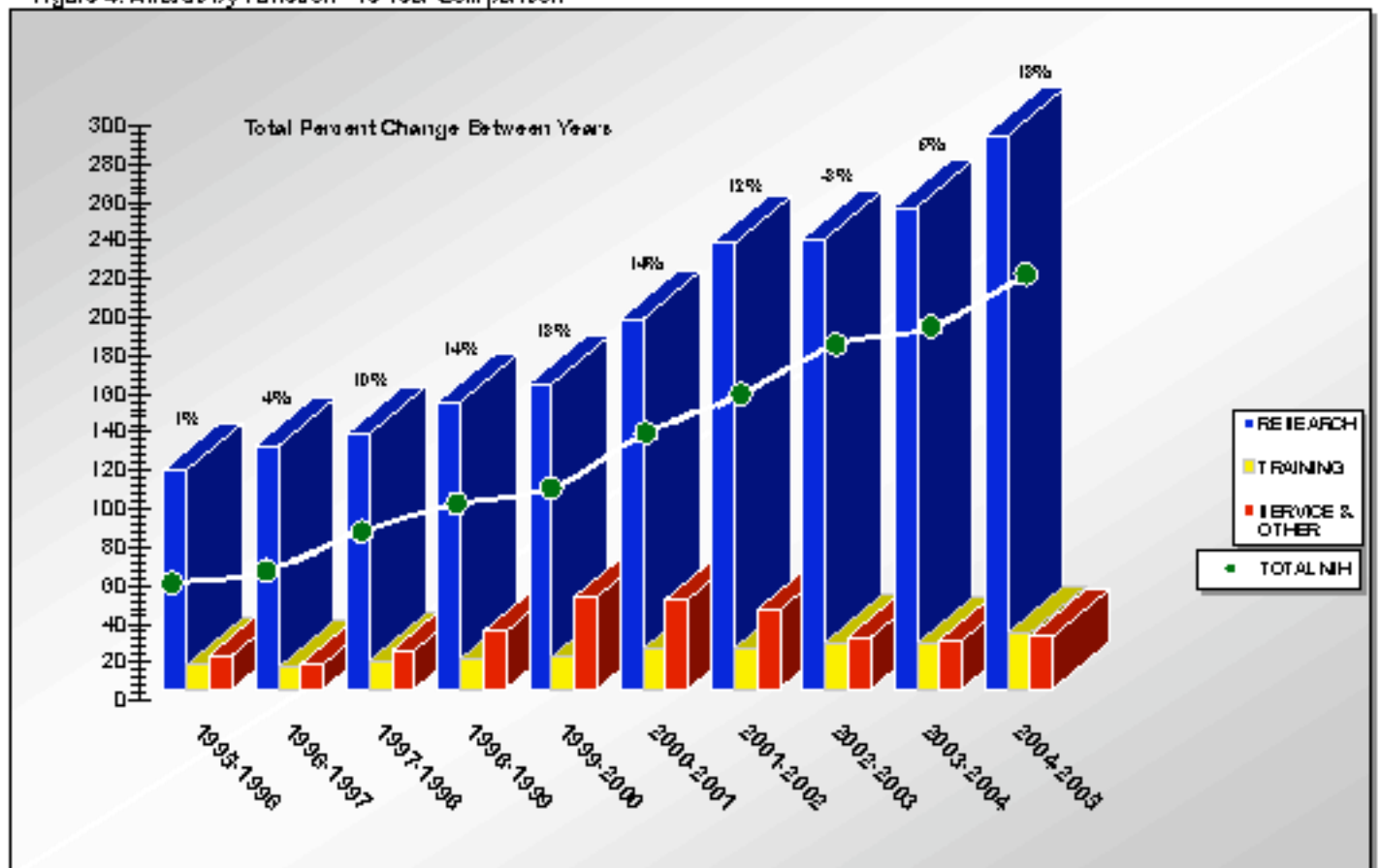
SCHOOL OF MEDICINE AWARDS BY UNIT OVER ONE MILLION

ORGANIZATIONAL UNIT	Direct Costs	F&A	TOTAL
SCHOOL OF MEDICINE			
Medicine	\$57,688,893	\$16,128,828	\$74,013,521
Pediatrics	\$37,280,331	\$6,750,451	\$48,010,782
Psychiatry	\$35,448,977	\$7,890,209	\$43,097,186
Cancer Center	\$18,523,943	\$5,392,262	\$21,916,225
Barbara Davis Center	\$12,795,573	\$4,968,259	\$17,753,832
Pharmacology	\$11,304,570	\$4,220,812	\$15,925,182
Dean ³	\$13,058,850	\$623,310	\$13,912,160
Preventive Medicine	\$6,039,829	\$1,791,847	\$9,831,476
Biochemistry/Biophysics/Genetics	\$6,452,812	\$2,827,928	\$9,080,738
Mitochondry	\$4,951,483	\$1,991,755	\$9,973,238
Cellular & Structural Biology	\$4,051,505	\$1,844,779	\$9,493,344
Surgery	\$4,933,315	\$1,433,047	\$9,388,382
Neurology	\$4,294,102	\$1,439,123	\$5,733,225
Immunology	\$3,891,313	\$1,441,718	\$5,333,029
Pathology	\$3,724,901	\$1,391,196	\$5,116,099
Physiology	\$2,662,095	\$1,159,876	\$4,040,773
Cabrako Health Outcomes Program	\$2,999,818	\$838,809	\$3,888,425
Anesthesiology	\$3,049,871	\$372,887	\$3,422,358
Rehabilitation Medicine	\$2,947,792	\$438,850	\$3,384,402
Family Medicine	\$2,992,562	\$402,004	\$2,994,568
Otolaryngology	\$2,558,290	\$293,970	\$2,662,280
Obstetrics/Gynecology	\$2,105,823	\$543,531	\$2,049,457
Metabolism	\$1,070,747	\$413,380	\$1,484,127
Dermatology	\$1,241,702	\$195,750	\$1,437,452
Radiology	\$634,893	\$214,494	\$1,049,187
Institutes and Centers	\$780,410	\$237,061	\$1,017,491
GRAND TOTAL	\$248,999,941	\$67,017,979	\$915,417,920

AWARDS BY FUNCTION 10 YEAR COMPARISON

FISCAL YEAR	TOTAL		RESEARCH		TRAINING		SERVICE & OTHER	
	Number	Amount	Number	Amount	Number	Amount	Number	Amount
1995-1996	1,064	\$144,723,812	730	\$114,440,250	137	\$12,831,550	187	\$17,851,812
1996-1997	1,139	\$150,547,250	793	\$123,704,935	125	\$10,838,340	218	\$12,804,345
1997-1998	1,125	\$137,451,348	798	\$133,004,821	143	\$14,454,830	183	\$19,991,797
1998-1999	1,311	\$194,809,048	903	\$148,717,031	171	\$15,420,458	234	\$28,632,157
1999-2000	1,321	\$223,975,194	884	\$158,158,410	187	\$18,794,001	270	\$46,022,783
2000-2001	1,479	\$280,088,240	1,014	\$182,918,231	239	\$20,585,898	228	\$46,534,111
2001-2002	1,444	\$294,832,552	1,035	\$232,254,837	188	\$21,194,852	211	\$41,183,283
2002-2003	1,524	\$283,127,837	1,088	\$234,833,804	215	\$24,258,338	223	\$27,034,897
2003-2004	1,521	\$299,807,112	1,118	\$251,219,018	195	\$23,421,552	210	\$25,188,542
2004-2005	1,818	\$345,428,958	1,230	\$288,571,788	200	\$29,283,304	188	\$27,593,838

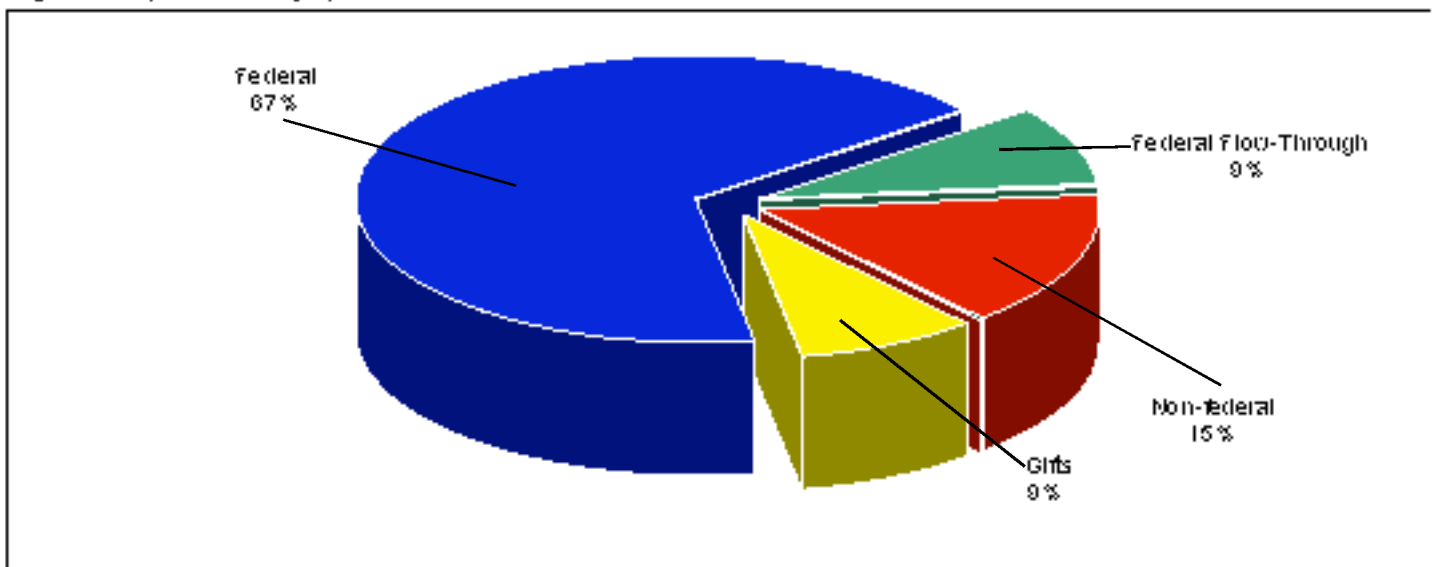
Figure 4: Awards by Function - 10 Year Comparison



EXPENDITURES BY SPONSOR

Sponsor	Direct Costs	Recovery of F & A Costs	Total Costs
Federal			
Department of Health and Human Services (DHHS)			
National Institutes of Health	\$123,180,985	\$42,642,501	\$165,823,486
Other	\$31,479,210	\$7,272,874	\$38,752,084
Total DHHS	\$154,660,195	\$49,915,375	\$204,575,570
Federal Other Than DHHS			
Department of Defense	\$1,015,896	\$390,235	\$1,406,131
Department of Education	\$2,075,755	\$374,598	\$2,450,353
National Science Foundation	\$738,056	\$318,873	\$1,056,929
Veterans Administration	\$3,947,715	\$0	\$3,947,715
Other Federal	\$1,283,501	\$28,997	\$1,312,498
Total Non-DHHS	\$9,060,923	\$1,112,703	\$10,173,626
Federal Flow Through⁵			
Associations & Foundations	\$1,733,531	\$525,143	\$2,258,674
Hospitals & Universities	\$6,497,686	\$2,252,778	\$8,750,464
Industry	\$7,377,272	\$2,489,769	\$9,867,041
State/Local Government	\$8,318,999	\$814,835	\$9,133,834
Total Federal Flow Through	\$21,927,488	\$6,082,525	\$28,010,013
Total Federal	\$185,648,806	\$57,110,803	\$242,759,209
Non-Federal			
Associations & Foundations	\$16,613,718	\$1,118,500	\$17,732,218
Gifts From All Donors ⁶	\$26,781,738	\$0	\$26,781,738
Hospitals & Universities	\$694,264	\$158,964	\$853,228
Industry	\$14,665,969	\$2,463,484	\$17,129,453
International	\$305,334	\$59,807	\$365,141
State/Local Government	\$8,206,158	\$813,464	\$9,019,622
Total Non-Federal	\$67,267,181	\$4,514,219	\$71,781,400
Grand Total	\$252,915,787	\$61,724,822	\$314,640,609

Figure 5: Expenditures by Sponsor



**ORGANIZATIONAL UNIT EXPENDITURES BY
SPONSORED PROGRAM AND OTHER RESTRICTED FUND ACTIVITY**

<u>ORGANIZATIONAL UNIT</u>	<u>SPONSORED PROGRAM</u>		<u>OTHER RESTRICTED FUNDS</u>	<u>Total</u>
	<u>Direct Costs</u>	<u>F&A Costs</u>	<u>Direct Costs</u>	
OFFICE OF THE CHANCELLOR	\$2,774,818	\$208,810	\$787,272	\$3,770,900
SCHOOL OF DENTISTRY	\$2,878,808	\$84,888	\$408,288	\$4,120,688
SCHOOL OF MEDICINE	\$208,878,824	\$67,422,876	\$24,781,408	\$282,683,701
SCHOOL OF NURSING	\$8,888,868	\$841,718	\$270,708	\$10,001,294
SCHOOL OF PHARMACY	\$10,471,748	\$2,817,728	\$628,074	\$13,917,550
GRAND TOTAL	\$228,134,048	\$68,1724,822	\$28,781,788	\$314,840,808

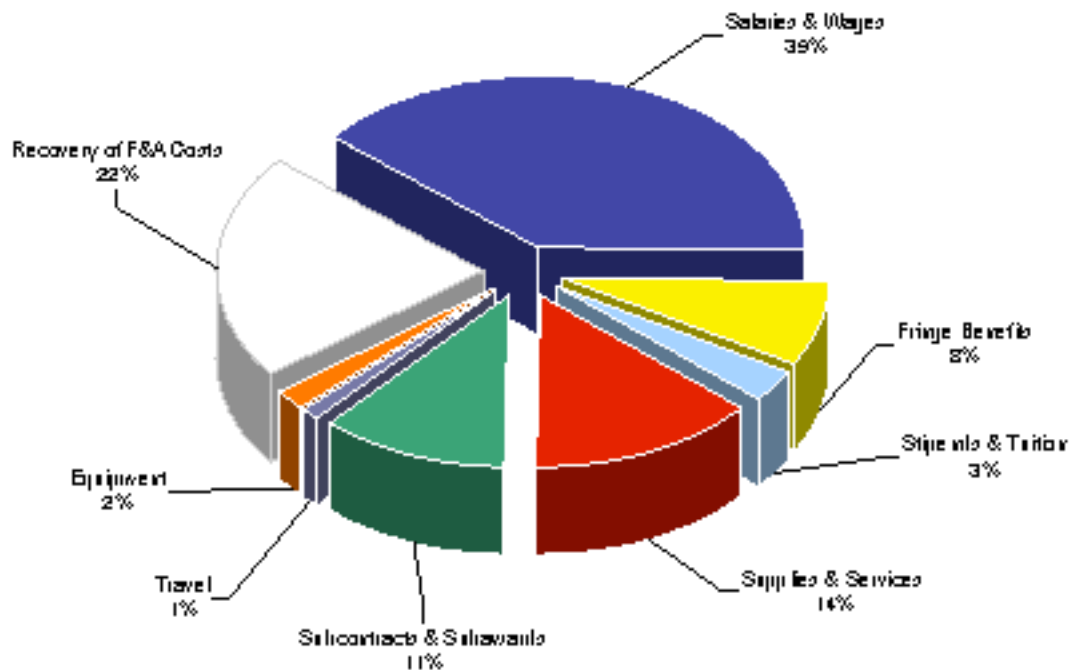
SCHOOL OF MEDICINE UNIT EXPENDITURES OVER FOUR BILLION

<u>ORGANIZATIONAL UNIT</u>	<u>SPONSORED PROGRAM</u>		<u>OTHER RESTRICTED FUNDS</u>	<u>Total</u>
	<u>Direct Costs</u>	<u>F&A Costs</u>	<u>Direct Costs</u>	
SCHOOL OF MEDICINE				
Medicine	\$46,879,730	\$13,967,612	\$5,285,046	\$66,222,288
Psychiatry	\$33,997,740	\$7,287,037	\$580,172	\$41,864,949
Pediatrics	\$30,206,400	\$7,470,126	\$1,871,846	\$39,548,372
Cancer Center	\$13,612,966	\$4,737,196	\$1,982,442	\$20,332,604
Bailes David Center	\$10,231,776	\$3,482,878	\$1,882,706	\$15,597,360
Pharmacology	\$8,477,808	\$3,637,287	\$1,680,660	\$13,795,755
Dean School Support	\$8,667,212	\$816,779	\$118,967	\$9,602,958
Preventive Medicine	\$7,074,812	\$1,683,168	\$465,279	\$9,223,259
Biochem/Biophysics/Genetics	\$5,284,318	\$2,038,271	\$561,799	\$7,884,388
Pathology	\$4,431,626	\$1,966,620	\$266,996	\$6,665,242
Microbiology	\$4,370,820	\$1,762,231	\$263,963	\$6,396,014
Cellular & Structural Biology	\$3,686,762	\$1,444,288	\$246,296	\$5,377,346
Physiology	\$3,227,880	\$1,017,638	\$784,934	\$4,990,452
Neurology	\$3,346,111	\$1,288,222	\$176,388	\$4,810,721
Immunology	\$2,832,442	\$841,722	\$74,108	\$3,748,272
Surgery	\$2,167,807	\$535,281	\$1,622,748	\$4,325,836
Total of Unit Expenditures Over Four Billion	\$188,833,887	\$68,808,888	\$18,864,442	\$276,507,217

SPONSORED PROJECT EXPENDITURES BY COST CATEGORY

Cost Category	Total ⁷	Percentage	Federal		
			Federal	Flow-Through ⁸	Non-Federal
Salaries & Wages	\$110,100,379	39%	\$79,163,660	\$12,212,362	\$18,734,467
Fringe Benefits	\$23,260,246	8%	\$16,838,322	\$2,624,831	\$3,897,093
Stipends & Tuition	\$3,984,336	3%	\$7,346,983	\$14,733	\$1,622,620
Supplies & Services	\$40,320,626	14%	\$26,666,662	\$3,087,632	\$10,676,441
Subcontracts & Subawards	\$32,431,773	11%	\$26,832,763	\$2,889,161	\$3,709,859
Travel	\$3,488,149	1%	\$2,699,912	\$334,249	\$533,988
Equipment	\$5,687,304	2%	\$4,464,726	\$854,631	\$357,947
Recovery of F&A Costs	\$51,724,822	22%	\$51,028,079	\$5,082,626	\$4,614,218
Total	\$286,877,834	100%	\$213,810,837	\$28,010,014	\$44,168,833
Source by Percent	100%		76%	10%	16%

Figure 8: Sponsored Project Expenditures by Cost Category

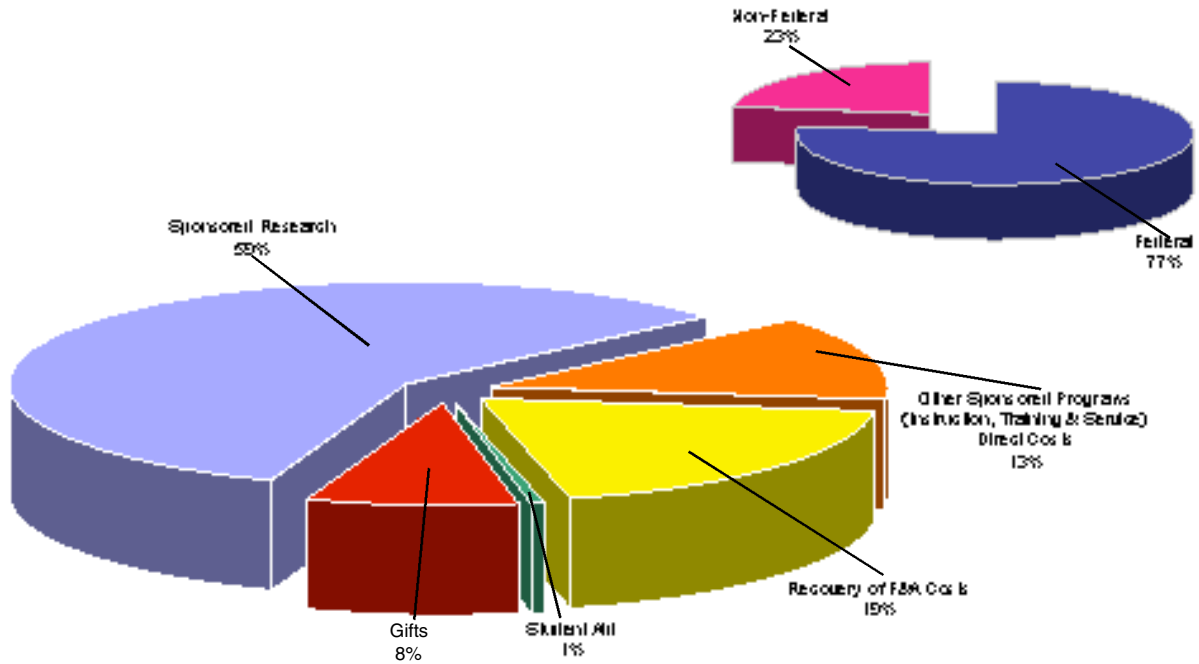


10-YEAR COMPARISON OF EXPENDITURES BY SPONSORED PROGRAM, STUDENT AID, AND GIFT ACTIVITY⁹

FUNDING SOURCE	1986-1988	1989-1997	1987-1988	1988-1989	1988-2000	2000-2001	2001-2002	2002-2008	2008-2009	2009-2010
SPONSORED RESEARCH/DIRECTORIAL (DC)										
Federal	\$60,883,637	\$65,730,280	\$71,606,178	\$81,779,200	\$88,690,488	\$98,129,489	\$118,675,203	\$136,320,008	\$160,588,082	\$155,209,690
Non-Federal	\$15,637,090	\$16,139,069	\$18,688,250	\$19,105,637	\$19,280,410	\$19,990,912	\$24,690,220	\$28,732,673	\$28,311,264	\$27,599,520
Innovated Research DC Subtotal:	\$76,520,726	\$81,869,349	\$90,294,428	\$100,884,837	\$107,970,898	\$118,120,401	\$143,365,423	\$165,052,681	\$188,899,346	\$182,809,210
OTHER SPONSORED PROGRAMS DC										
Institution, Training & Services:										
Federal	\$17,913,886 ¹⁰	\$15,789,467	\$16,437,965	\$21,180,971	\$17,388,861	\$16,913,664	\$20,600,343	\$24,161,109	\$28,610,330	\$29,410,745
Non-Federal	\$14,545,200 ¹⁰	\$17,229,085	\$21,405,102	\$16,958,189	\$21,457,295	\$20,895,201	\$23,001,813	\$14,216,289	\$12,143,401	\$11,972,885
Other Sponsored Programs DC Subtotal:	\$32,459,086	\$33,018,552	\$37,843,067	\$38,139,160	\$38,846,156	\$37,808,865	\$43,602,156	\$38,377,498	\$40,753,731	\$41,383,630
RECOVERY OF F&A COSTS										
Federal	\$22,667,324	\$23,501,949	\$25,716,941	\$28,236,612	\$31,631,620	\$35,034,113	\$41,914,961	\$48,280,068	\$53,645,344	\$57,110,601
Non-Federal	\$28,111,994	\$2,506,900	\$3,246,007	\$3,781,288	\$3,880,528	\$4,698,217	\$5,022,951	\$4,513,042	\$4,891,648	\$4,614,218
Recovery of F&A Subtotal:	\$50,779,318	\$26,008,849	\$28,962,948	\$32,017,900	\$35,512,148	\$39,732,330	\$46,937,912	\$52,793,110	\$58,536,992	\$61,724,819
Innovated Program Subtotal:	\$127,749,144	\$107,888,198	\$119,257,376	\$132,902,737	\$143,529,204	\$157,853,696	\$190,265,539	\$217,845,289	\$247,186,269	\$244,534,659
Gift (Non-Federal)	\$11,278,648	\$11,888,688	\$12,186,689	\$12,848,833	\$12,786,178	\$10,874,673	\$10,268,818	\$14,685,680	\$14,444,866	\$18,751,733
STUDENT AID¹²										
Federal	\$804,508	\$801,175	\$1,281,700	\$1,061,493	\$916,477	\$892,218	\$967,201	\$988,265	\$648,142	\$908,210 ⁹
Non-Federal	\$1,289,195	\$1,462,288	\$1,332,622	\$1,746,693	\$1,272,695	\$1,169,503	\$1,071,442	\$1,055,123	\$1,284,934	\$949,029
Student Aid Subtotal:	\$2,093,703	\$2,263,463	\$2,614,322	\$2,808,186	\$2,189,172	\$2,061,721	\$2,038,643	\$2,043,388	\$1,933,076	\$1,857,239
GRAND TOTAL OF EXPENDITURES:	\$147,829,838	\$138,950,672	\$147,823,864	\$164,748,617	\$163,506,331	\$168,718,519	\$201,267,179	\$230,987,387	\$270,474,306	\$249,140,808
Percentage Increase from Prior Fiscal Year:	7.5%	5.6%	10.1%	8.6%	7.5%	8.2%	17.5%	10.5%	7.6%	3.3%

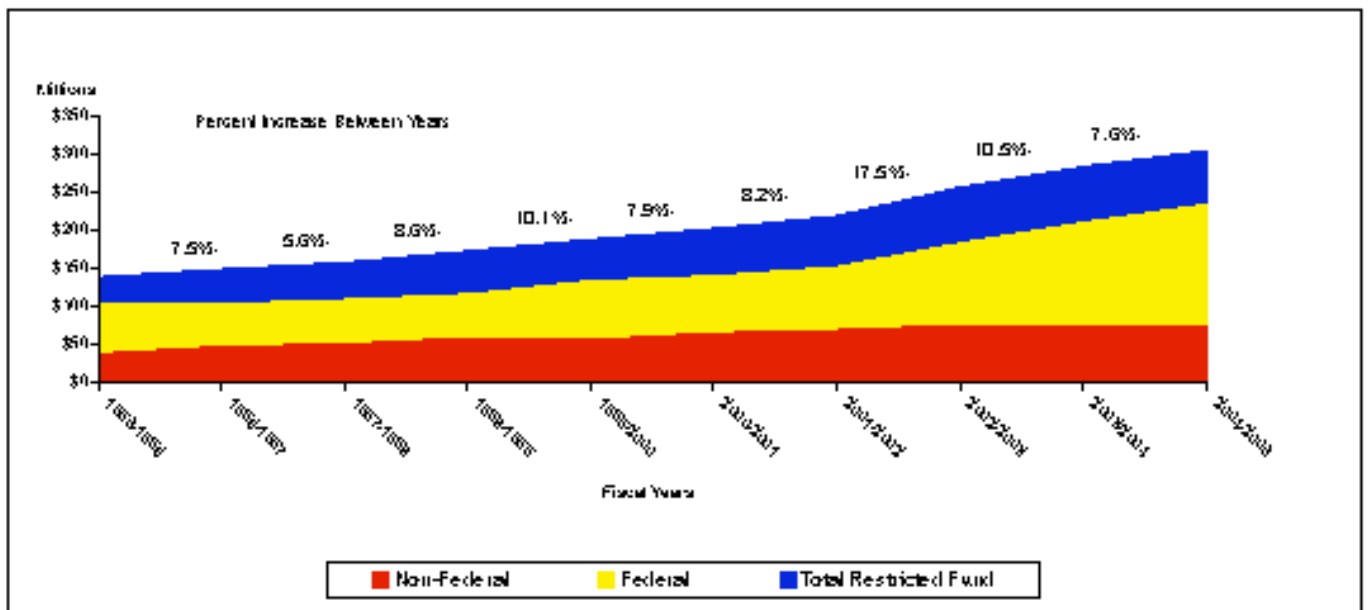
EXPENDITURES BY FUNDING SOURCES¹³

Figure 7



10 YEAR COMPARISON OF TOTAL, FEDERAL, AND NON-FEDERAL EXPENDITURES¹⁴

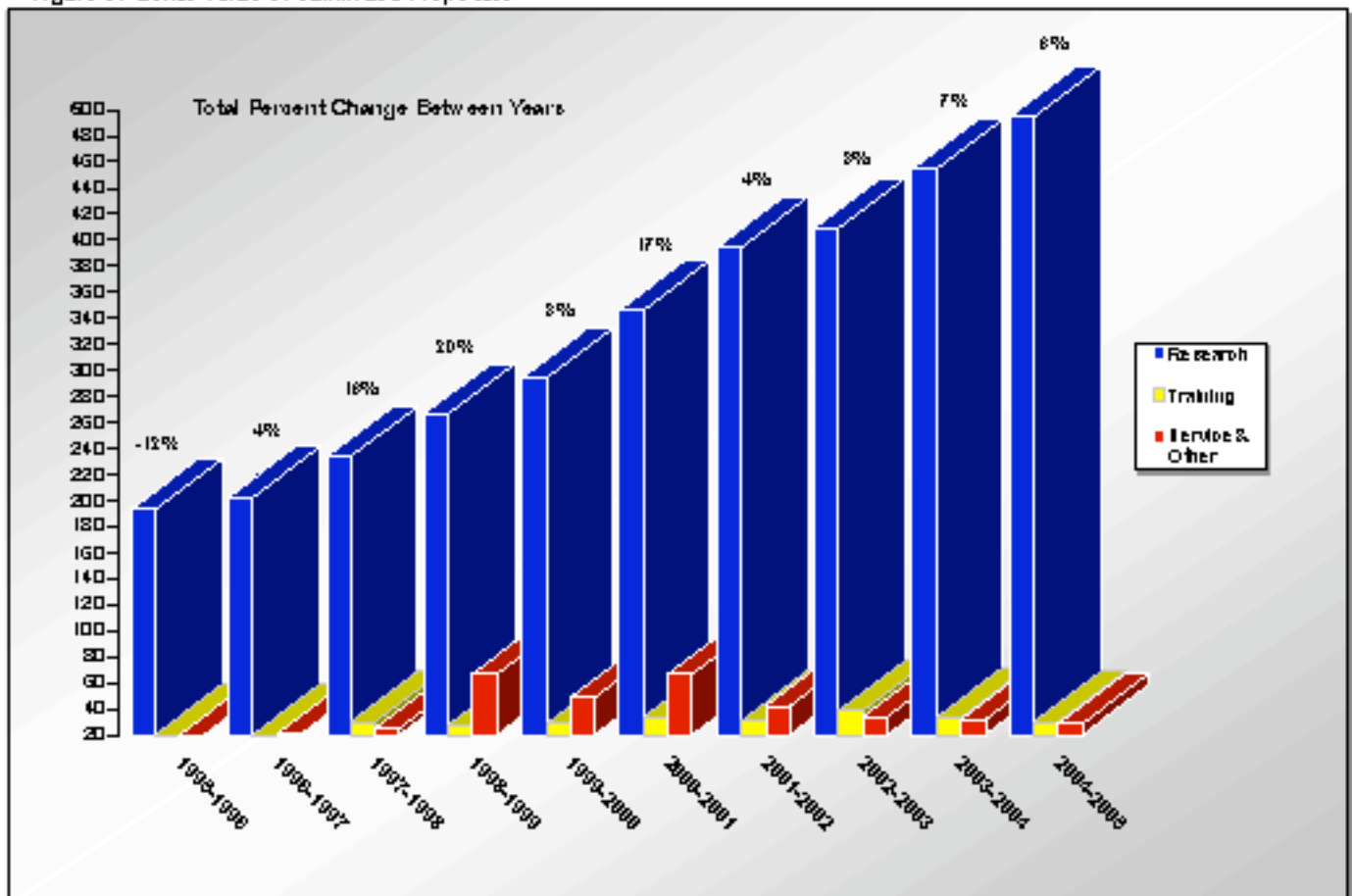
Figure 8



APPLICATIONS AND PROPOSALS SUBMITTED FOR SPONSORED PROGRAM FUNDING 10 YEAR COMPARISON

FISCAL YEAR	TOTAL		RESEARCH		TRAINING		SERVICE & OTHER	
	Number	Amount	Number	Amount	Number	Amount	Number	Amount
1995-1996	1,531	\$232,830,179	1,124	\$192,963,053	214	\$20,003,868	193	\$19,860,138
1996-1997	1,710	\$242,534,000	1,244	\$202,289,470	230	\$19,578,814	233	\$20,765,716
1997-1998	1,703	\$268,117,818	1,309	\$233,409,197	251	\$29,959,554	203	\$21,749,037
1998-1999	1,882	\$300,719,622	1,365	\$293,287,565	234	\$27,853,912	243	\$33,778,355
1999-2000	2,062	\$370,358,468	1,424	\$293,789,329	312	\$28,181,208	323	\$48,367,951
2000-2001	2,025	\$443,403,280	1,491	\$343,097,580	305	\$33,531,801	229	\$33,744,109
2001-2002	2,224	\$437,077,273	1,370	\$394,289,635	298	\$30,622,388	256	\$41,865,052
2002-2003	2,442	\$481,301,721	1,881	\$408,901,179	335	\$38,525,285	243	\$33,875,257
2003-2004	2,640	\$518,893,231	2,043	\$454,310,945	325	\$33,033,180	289	\$31,349,123
2004-2005	2,716	\$533,055,463	2,208	\$494,309,657	273	\$30,123,447	235	\$28,622,179

Figure 9: Dollar Value of Submitted Proposals



Top 50 Sponsored Program Awards

Fiscal Year 2005

Principal Investigator	Title	Sponsor	
Richard Krugman	General Clinical Research Center - Adult	National Center for Research Resources	\$7,297,966
Richard Irons	China Leukemia Lymphoma Project	American Petroleum Institute	\$6,038,344
Richard Krugman	General Clinical Research Center - Pediatrics	National Center for Research Resources	\$3,539,007
Paul Bunn	Cancer Center Support Grant	National Cancer Institute	\$3,562,737
Paula Riggs	Rocky Mountain Regional Clinical Trials Node	National Institute on Drug Abuse	\$3,327,643
George Eisenbarth	Virginia Mason/UCHSC Autoimmune Prevention Center	National Institute of Allergy and Infectious Diseases	\$3,096,127
Richard Krugman	UCDHSC Autoimmunity and Immunotherapeutics	Center National Center for Research Resources	\$2,921,187
Spero Manson	Coordinating Center of HIS/NDP Competitive Grant Program	Department of Health and Human Services	\$2,881,918
Herman Jenkins	International Hearing Center for Information Control Education Resources and Research (Marion Downs Hearing Center)	Centers for Disease	\$2,808,560
Ivan McMurtry	Adaptations to Hypoxia	National Heart Lung and Blood Institute	\$2,291,031
Cordelia Robinson	Project Bloom	Colorado Department of Human Services	\$2,256,541
Paul Bunn	Spore in Lung Cancer	National Cancer Institute	\$2,253,785
Constance A. Benson	Aids Education and Training Centers	Health Resources And Services Administration	\$2,119,432
John T Brewster	Signal Treatment Contract	Signal Behavioral Health Network	\$2,104,906
David Crawford	National Lung Screening Trail (NLST) (Contract Modification to PLCO Cancer Screening Trial)	National Cancer Institute	\$2,094,698
Robert Freedman	Molecular Neurobiology of Schizophrenia	National Institute of Mental Health	\$2,002,432
Randy Kluender	Equipment the Dental Clinic in the Lazarra Center for Oral-Facial Health on the Fitzsimons Campus	Colorado Department Health Care Policy Financing	\$2,000,000
Courtney Fletcher	University of Colorado Center for Aids Research (CFAR)	National Institute of Allergy and Infectious Diseases	\$1,932,988
Anirban Banerjee	Trauma Primes Cells	National Institute of General Medical Sciences	\$1,900,031
Thomas Campbell	Adult AIDS Clinical Trials Unit (AACTU)	National Institute of Allergy and Infectious Diseases	\$1,836,247
Thomas Crowley	Antisocial Drug Dependence: Genetics	National Institute on Drug Abuse	\$1,752,872
Richard Irons	China Leukemia Lymphoma Project	American Petroleum Institute	\$1,748,060
Kathryn V. Holmes	SARS Coronavirus: Inhibition Of Entry	National Institute of Allergy and Infectious Diseases	\$1,715,730
Myron Levin	International Pediatric and Perinatal HIV Studies Network	Westat, Inc.	\$1,576,708
David Quissell	Enhancing Dental Research Infrastructure at University of Colorado	National Institute of Dental Research	\$1,540,000

John T Brewster	Denver County Community Corrections Peer I/ Haven Contract	Denver County Community Corrections Board	\$1,533,468
James Hill	Look Ahead: Action for Health in Diabetes	National Institute of Diabetes/ Digestive/ Kidney Diseases	\$1,494,074
Edward Abraham	Heterogeneous Neutrophil Responses in Acute Lung Injury	National Heart Lung and Blood Institute	\$1,471,235
Donald Gildea	Gene Expression in Acute and Chronic Neurologic Disease	National Institute of Neurological Disorders	\$1,455,508
Boris Tabakoff	Gene Array Technology Center For Alcohol Research	National Institute of Alcohol Abuse and Alcoholism	\$1,444,349
Paula Riggs	Rocky Mountain Regional Clinical Trials Node	National Institute on Drug Abuse	\$1,427,643
Dana Dabelea	Western Registry of Diabetes in Youth (Search)	Centers for Disease Control	\$1,418,823
Julie Marshall	Rocky Mountain Prevention Research Center	Centers for Disease Control	\$1,415,981
John Hutton	UCDHSC Diabetes and Endocrinology Research Center	National Institute of Diabetes/ Digestive/ Kidney Diseases	\$1,353,871
Kurt Stenmark	Impact of Injury on the Immature Pulmonary Circulation	National Heart Lung and Blood Institute	\$1,321,188
Stephen Goodman	Genetic Biochemical Disorders in Mental Retardation	National Institute of Child Health and Human Development	\$1,292,744
Robert Schrier	Vasopressin and Hyperosmolality: Regulation Adaptation and Remodeling	National Institute of Diabetes/ Digestive/ Kidney Diseases	\$1,265,756
John Kinsella	Inhaled NO for the Prevention of Chronic Lung Disease	National Heart Lung and Blood Institute	\$1,245,274
Thomas Henthorn	VAMC Anesthesia Services	Veterans Administration	\$1,218,010
Marvin Schwarz	Lung Tissue Research Consortium	National Heart Lung and Blood Institute	\$1,167,833
Spero Manson	Understanding and Reducing Native Elder Health Disparities	Agency for Healthcare Research and Quality	\$1,149,479
Norbert Voelkel	Pathobiology of Severe Pulmonary Hypertension	National Heart Lung and Blood Institute	\$1,137,017
Spero Manson	American Indian and Alaska Native Mental Health Research	National Institute of Mental Health	\$1,136,800
Spero Manson	Wounded Spirits Ailing Hearts PTSD and CVD in Indians	National Heart Lung and Blood Institute	\$1,078,305
Spero Manson	American Indian and Alaska Native Health Disparities	National Center on Minority Health and Health Disparities	\$1,062,939
Stephen Goodman	Center Grant for Research in Mental Retardation	National Institute of Child Health and Human Development	\$1,041,004
Catherine M. Romaniello	CSU Food Stamp Nutrition Education Program	Colorado State University	\$1,033,742
Fred R Hirsch	Az-Ma-Ihc: Studies of Immunohistochemistry and Fish Markers to Determine Sensitivity to Gefitinib	AstraZeneca, L.P.	\$1,011,296
Arthur Davidson	Connecting Colorado Communities-Health Information	Collaborative Agency for Healthcare Research and Quality	\$999,491
Robert Murphy	Lipid Maps Informatics and Contextual Proteomics/Core	University of California at San Diego	\$972,536

Fiscal Year 2005

- 1 Fiscal Year (FY) 2005 spans the period July 1, 2004 through June 30, 2005. Tables, charts, and figures that span a greater period are marked accordingly.

Section 1: Awards

- 2 (a) Data presented in this section represent awards received by OGC during or before FY 2005. In prior years, awards were accounted for by including awards with budget begin dates within a given fiscal year. For FY 2004-2005, awards are reported based on the date the award was received regardless of the budget begin date.
- (b) Percentiles of + .01 due to rounding.

Awards By Organizational Unit

- 3 Fitzsimons construction awards of \$2,921,187 are included in the amounts given for the Dean, School of Medicine.

Section 2: Expenditures

- 4 (a) Although award activity includes awards for Fitzsimons construction, \$5,119,711 of expenditure activity was reported in the plant fund and thus not included in the restricted fund expenditure data.
- (b) Percentiles of + .01 due to rounding.

Expenditures by Sponsor

- 5 Includes federal funds that are subcontracted to UCDHSC by non-federal institutions.
- 6 Gift expenditures are not segregated by sponsor.

Sponsored Project Expenditures by Cost Category

- 7 Excludes student aid direct costs of \$1,881,239 (\$938,210 federal and \$943,029 non-federal), and gifts of \$26,781,738.
- 8 Includes funds, federal in origin, that are subcontracted to UCDHSC by non-federal institutions.

10-Year Comparison of Expenditures by Sponsored Program, Student Aid, and Gift Activity

- 9 Prior Annual Reports (beginning in 1995-1996 through 1999-2000) included the Federal Direct Student Loan (FDSL) Program in federal student aid. Beginning with 2000-2001, FDSL amounts have been removed from federal student aid because of a National Association of College and University Business Officers (NACUBO) reporting requirement. Data for the prior 5 years have also been adjusted to reflect comparable data across all years presented.
- 10 Beginning in 1995-1996, program income (grant related) projects were reclassified from federal to non-federal.
- 11 Facilities and Administrative costs include \$126,329 attributable to student aid projects whose direct costs have been reported in the direct cost column of sponsored programs.
- 12 The campus financial statements consider certain expenditures with an expense purpose code of research, instruction, training, and service as student aid because the account code is in the student aid series. If there are any questions about these variances, please contact the Grants and Contracts Manager of Accounting.

Expenditure by Funding Source

- 13 (a) Student aid information presented is limited to restricted fund dollars.
- (b) Reference page 13 for detailed information on this figure.

10-Year Comparison of Total, Federal, and Non-Federal Expenditures for Sponsored Program, Student Aid, and Gift Activity

- 14 Reference page 13 for detailed information on this figure.

Notes

Notes