

UNIVERSITY OF COLORADO DENVER

ANSCHUTZ MEDICAL CAMPUS



2008-2009

Student Accident and Sickness Health Plan

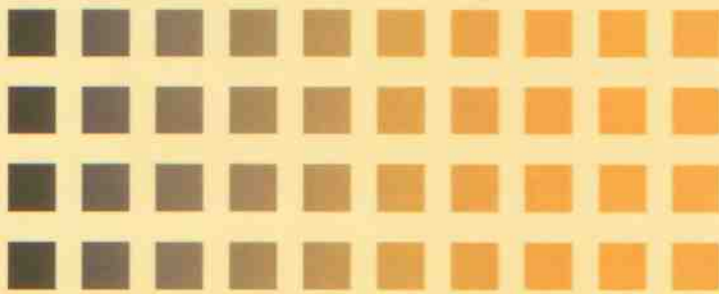


TABLE OF CONTENTS

Student Health Insurance Office Letter	1
Student Accident and Sickness Health Plan	2
Eligibility	2
Waiver and Enrollment Policy	2-3
Coverage Dates and Costs	3
Dependent Coverage	4
Late Enrollment	4
Confirmation of Coverage for Particular Services	4-5
Summary of Benefits	5
Policy Year Deductibles	5
Out-of-Pocket Maximum	5
Prescription Drug Plan – Express Scripts	6
Pre-Existing Conditions	6-7
Right of Reimbursement	7
Maximum Benefit	7
General Plan Provisions	7
Covered Medical Expenses	7-11
Medical Evacuation Benefit	11
Exclusions and Limitations	11-12, 17
Schedule of Medical Benefits	13-16
Extension of Benefits After Termination	17
Continuation Plan	18
Coordination of Benefits	18
Disputed Claims	18
Definitions	19-24
Medical Management Program	24-26
Important Notice	27
Privacy Policy	27
Insurance Company	27
Claim Procedures	27
Claims, Eligibility and Benefit Questions	28
Participating Provider Organization	28
Medical Management Program	28
Vision Plan	28

